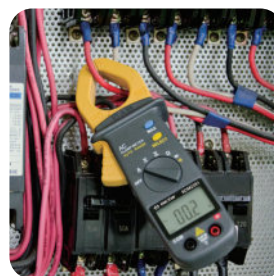
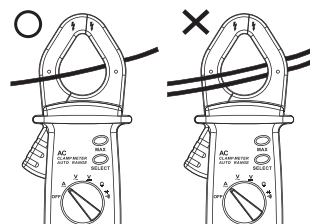


Digital Clamp Meter

9DM2351

- Max clamp size : Ø 30mm
- Unit & function indication, maximum reading value 1999 digits
- Negative polarity indicator (no indication is given for positive polarity)
- Auto power off selection approx. 15 minutes
- Low power consumption
- AAA battery x 2 PC. included
- CE approval IEC 61010-1, IEC 61010-2-032
CAT.III 600V Pollution Degree 2
- Attachable test leads, easy operation



Specification	
AC Ampere (0.1A - 1A)	200A / 600A
AC Voltages (0.001V - 1V)	2V / 20V / 200V / 600V
DC Voltages (0.1mV - 1V)	200mV / 2V / 20V / 200V / 600V
Resistance (0.1Ω - 0.01MΩ)	200Ω / 2kΩ / 20kΩ / 200kΩ / 2MΩ / 20MΩ
Continuity check	Yes
Diode test	Yes
Low battery indicator	Yes
LCD Display	3 1/2 digits 1999 counts
Sampling rate	3 times / Sec.
Overload indicator	OL

KT NO.	Size (mm) L x W x H		
9DM2351	189 x 71 x 37	354	5 / 40

AC Non-contact Voltage Tester

6CB31

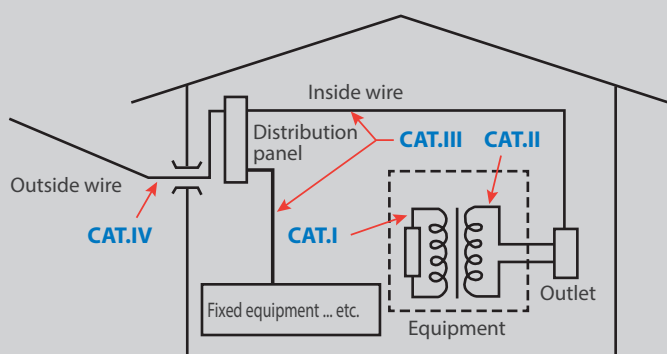
- Voltage ranges : 80 to 1000V AC.(50~60Hz)
- Application :
AC voltage in outlets, lighting, circuit breakers, wires and cables etc..
- Adjustable sensitivity voltage detection
- Visible LED light voltage indicator in tip
(Green light is high gear, red light is low gear)
- AAA battery x 2 PC. included
- Standard category :
EN 61000-6-3 / EN 61000-6-1 CAT III



KT NO.	Overall size (mm) L x W x H		
6CB31	160 x 20 x 24	72	10 / 100

Measurement level

The input voltage should not exceed the maximum value.



Measurement level	Description	Example
CAT.I	Measurement directly connected to the power supply circuit board	The secondary of the transformer measured
CAT.II	Measurement board directly connected to the low voltage devices	Equipment, portable devices
CAT.III	Equipment within the building	Distribution panels, circuit breakers
CAT.IV	Sources of all low voltage installations	Overhead lines, cable facilities

