

PSA PEUGEOT CITROËN

Petrol Engine Timing Set



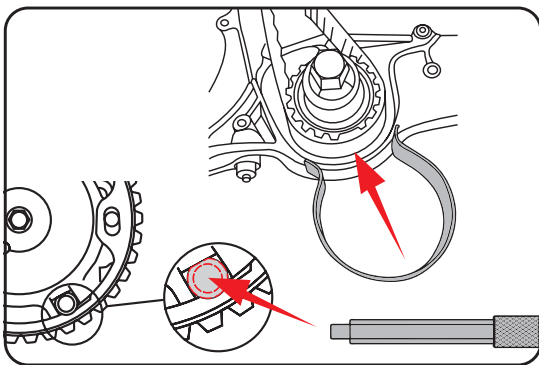
9AT1021E

- The set includes special flywheel tools and cam/ crankshaft timing pin
- Use to replace timing belt engines of:
1.0 / 1.1 / 1.4 / 1.6 / 1.6VTS / 1.8 16v / 2.0 / 2.0 16V / 2.2
- Include PSA "EW coded" twin-cam 16v engine and HPI versions
- Suitable for PSA Peugeot / Citroen engines

2164 1 / 10



21 PC.



CONTENTS :

- A – timing belt retaining tool
- B – tensioner adjusting tool
- C – flywheel locking tool
- D – flywheel holding tool
- E – flywheel plate locking tool
- F – flywheel locking tool
- G – flywheel locking tool
- H – tensioner locking tool
- I – tensioner locking tool
- J – timing pin

PSA PEUGEOT CITROËN

Diesel Engine Setting Tool (Belt Drive)

9AT2-A01

- The set includes flywheel locking pin, TDC timing pin and tensioner retaining tool
- Use for holding engine timing position when replacing timing belt
- Suitable for Fiat, Iveco, Renault, Citroen / Peugeot, Vauxhall / Opel



CONTENTS :

- A – TDC timing pin
- B – flywheel locking pin (2pc)
- C – tensioner retaining tool

112 12 / 120

MODEL: 2.8D/Tdl/Hdl
Relay / Jumper (01-06)
Boxer (00-06)

ENGINE: 8140.43
8140.43S
8140.63

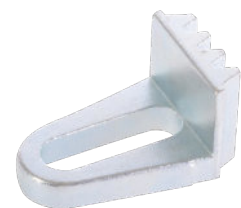
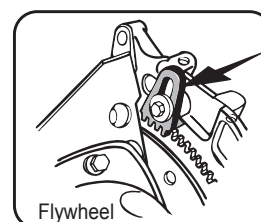


BELT

Petrol & Diesel Engine Flywheel Holding & Locking Tool

9AT3-E02

- Used to remove the crankshaft pulley when replacing the timing belt
- The pulley retaining bolt is fitted with high torque and the flywheel must be securely locked during installation / removal
- Jamming tools into the teeth of the flywheel will cause serious damage to both teeth and housing



64 25 / 100

Petrol 1.0 to 2.0 TU / XU (Belt)
XU 1.6 to 2.0

MODEL: Diesel 1.50 to 2 .50 TUD / XUD (Belt)
XU1.6 to 2.0
XD1.8D to 1.9D

