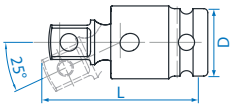




## 4796P 1/2"

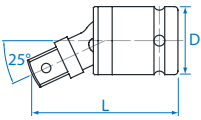
- Universal joint
- DIN 3121



KT NO.	Overall length Inch	mm	D mm			
4796P	2-3/8	59	25	124	6	96

## 4797P 1/2"

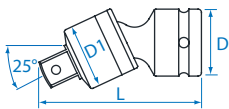
- Universal joint
- DIN 3121



KT NO.	Overall length Inch	mm	D mm			
4797P	2-1/2	65	29.1	168	6	96

## 4798P 1/2"

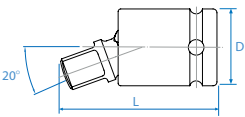
- Universal joint



KT NO.	Overall length Inch	mm	D mm	D1 mm			
4798P	3	74	29.1	29.1	213	6	96

## 4799P 1/2"

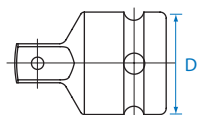
- Universal joint
- Durable pinless hex ball locking design
- DIN 3121



KT NO.	Overall length Inch	mm	D mm			
4799P	2-3/8	60	30	170	6	96

## 4873P 1/2"

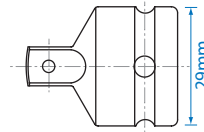
- Adapter
- Convert to 3/8"
- 4873P → Max. torque : 202 N-m
- DIN 3121



KT NO.	Spec.	D mm			
4873P	1/2"F x 3/8"M	25	66	10	160

## 4863P 1/2"

- Adapter
- Convert to 3/8", 3/4" drive
- 4863P → Max. torque : 202 N-m
- DIN 3121



4863P & 4866P

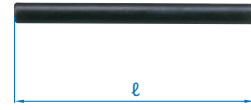
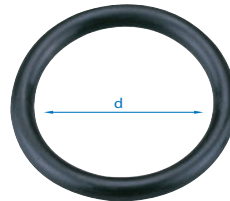
KT NO.	Spec.			
4863P	1/2"F x 3/8"M	97	10	160
4866P	1/2"F x 3/4"M	147	8	160

## 90401 1/2"

- Locking ring
- High tensile rubber material

## 90601 1/2"

- Locking pin
- Chrome vanadium steel
- DIN 3129



90401  
90402

90601  
90602

KT NO. Type  $\varnothing$  d / l Applied to socket sizes

90401	ring	3.5	19	4535M (8~14mm)	4535S (15/16"~9/16")
				4435M (8~14mm)	4435S (15/16"~9/16")
				4015M (5~14mm)	4015S (1/4"~1/2")
				4055M (4~14mm)	4055S (3/16"~1/2")
				4935M (10~14mm)	4935S (7/16"~9/16")
				4415M (17mm)	4575 (E10-E18)

90601	pin	3.0	20	414A08S, 4053, 4063, 4065, 4075, 4873, 4015, 4147, 4055, 4056
-------	-----	-----	----	---

90402	ring	3.5	23	4535M (15~46mm)	4535S (11/16"~1-1/4")
				4435M (15~46mm)	4435S (5/8"~1-1/4")
				4935M (16~30mm)	4935S (11/16"~1-1/4")
				4015M (17.19mm)	
				4415M (19.21mm)	
				4530M (15~36mm)	
				4575M (E20)	

90602	pin	3.0	25	4835M (19~30mm)
				4260, 4796, 4797, 4863, 4873, 4866