




Heavy Duty Crimping Tool

6AC51-26

- For cable lugs from 10mm²-150mm² with non-ratchet screw adjustment

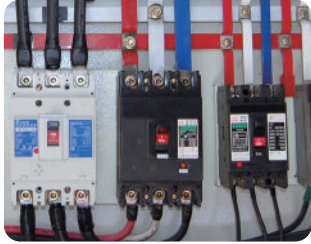



Crimping capacity

KT NO.	Overall length mm	 kg	 / 	Crimping capacity									
				AWG	8	6	4	2	1/0	2/0	3/0	4/0	300MCM
6AC51-26	665	3.9	1 / 5	JIS(mm ²)	8	14	22	38	60	70	80	100	150
				DIN(mm ²)	10	16	25	35	50	70	95	120	150

6AC52-12

- Ratchet designed. For non-insulated terminals



KT NO.	Overall length		 kg	 / 
	inch	mm		
6AC52-12	12	300	520	6 / 24

Item No.	AWG	16	14	10	8	6
	JIS mm ²	1.25	2	5.5	8	14
	DIN mm ²	1.5	2.5	6	10	16

6AC52-12	•	•	•	•	•
----------	---	---	---	---	---

