

Circlip Pliers Set

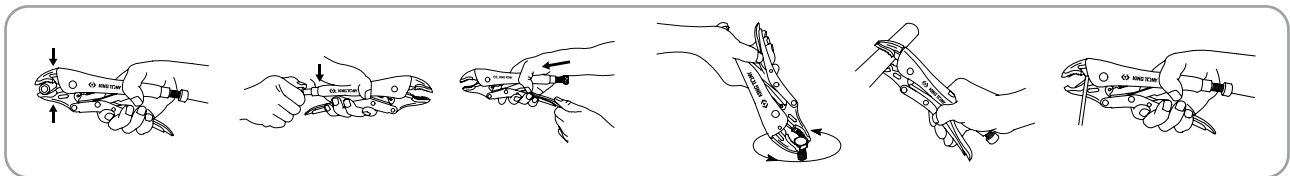
KT NO.	PC.	Contents				kg	Box		
42114GP	4	68HS-07	68SS-07	68HB-07	68SB-07	0.62	1 / 32		
42154GP	4	66HS-07	66SB-07	66HB-07	66SS-07	0.84	1 / 32		
42116GP	6	68HS-07	68HB-07	68HS-10	68SS-07	68SB-07	68SS-10	1.33	1 / 18



► Nylon pouch bag

• Finishing - option 1 : chrome plated (R) / option 2 : nickel plated (N)

Locking Pliers



6011

- Locking pliers curved jaw straight tip with wire cutter
- With adjusting screw and release lever
- 2X more gripping power hold object tighter
- ASME B107.500-2010



MATERIAL - Jaw : Spring alloy steel
Handle : Chrome molybdenum alloy steel



6011R



6011

KT NO.	Overall length		Jaw capacity mm	kg	Box
	inch	mm			
6011-05R	5-1/2	142	29	173	6 / 48
6011-07R	7	185	38	352	8 / 32
6011-07	7	185	38	351	8 / 32
6011-10R	10	254	48	542	8 / 32
6011-10	10	254	48	506	8 / 32

6012

- V jaw with wire cutter
- With adjusting screw and release lever
- ASME B107.500-2010



MATERIAL - Jaw : Chrome molybdenum alloy steel
Handle : Chrome molybdenum alloy steel



KT NO.	Overall length		Jaw capacity mm	kg	Box
	inch	mm			
6012-07	7	175	33	357	8 / 32
6012-10	10	254	45	541	8 / 32

6013-10

- Large curved jaw
- 3X more gripping power hold object tighter
- Turn hexagon screw adjust pressure
- Quick trigger release lever
- ASME B107.500-2010



MATERIAL - Jaw : Chrome molybdenum alloy steel
Handle : Chrome molybdenum alloy steel



KT NO.	Overall length		Jaw capacity mm	kg	Box
	inch	mm			
6013-10	10	254	50	550	8 / 32

6031

- Locking pliers straight jaw
- With adjusting screw and release lever
- ASME B107.500-2010



MATERIAL - Jaw : Spring alloy steel
Handle : Chrome molybdenum alloy steel



KT NO.	Overall length		Jaw capacity mm	kg	Box
	inch	mm			
6031-07	7	185	33	371	8 / 32
6031-10	10	254	45	535	8 / 32