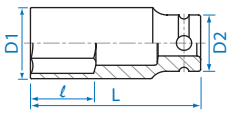


KT NO.	mm	D1 mm	D2 mm	ℓ mm	L mm		
493516M	16	23.0	30	16	80	201	6 / 96
493517M	17	24.5	30	16	80	211	6 / 96
493519M	19	27.0	30	18	80	222	6 / 96
493521M	21	29.0	30	20	80	230	6 / 96
493522M	22	30.5	30	22	80	261	5 / 60
493523M	23	32.0	30	24	80	273	5 / 60
493524M	24	33.0	30	24	80	285	5 / 60
493526M	26	35.5	30	27	80	303	5 / 60
493527M	27	37.0	30	27	80	335	5 / 60
493530M	30	40.5	30	30	80	376	5 / 50

## Impact Thin Wall Socket

### 4935S

- ANSI / ASME B107.2



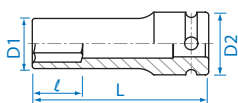
KT NO.	inch	D1 mm	D2 mm	ℓ mm	L mm		
493510S	5/16	13.0	25.0	12	80	129	6 / 120
493512S	3/8	16.0	25.0	12	80	144	6 / 120
493514S	7/16	16.7	25.0	13	80	148	6 / 120
493516S	1/2	19.0	25.0	14	80	159	6 / 120
493518S	9/16	20.5	25.0	14	80	165	6 / 120
493520S	5/8	23.0	25.0	16	80	167	6 / 96
493522S	11/16	24.5	30.0	17	80	235	6 / 96
493524S	3/4	27.0	30.0	18	80	224	6 / 96
493526S	13/16	29.0	30.0	20	80	250	6 / 96
493528S	7/8	30.5	30.0	22	80	260	5 / 60
493530S	15/16	33.0	30.0	24	80	336	5 / 60
493532S	1	34.0	30.0	24	80	356	5 / 60
493534S	1-1/16	37.0	30.0	27	80	405	5 / 60
493536S	1-1/8	39.0	30.5	27	80	355	5 / 50
493538S	1-3/16	40.5	30.0	30	80	417	5 / 50
493540S	1-1/4	42.5	30.0	32	80	389	5 / 50

## Extra Thin Wall Impact Socket

### 4415M

- Finishing - phosphate sunk
- For aluminum alloy wheel
- Material - chrome molybdenum alloy steel
- Super thin wall version has less strength than a standard deep one
- DIN 3121

Thin walled design (D1)



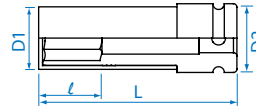
KT NO.	mm	D1 mm	D2 mm	ℓ mm	L mm		
441517M	17	23.8	25	17	80	163	6 / 96
441519M	19	25.8	30	20	80	214	6 / 96
441521M	21	27.8	30	22	80	221	6 / 96
441522M	22	29.5	30	24	80	238	6 / 96

## Wheel Nut Impact Socket

- Material - chrome molybdenum alloy steel
- Durable outer sleeve protects polished wheels and lug nuts
- Plastic sleeve thin wall version



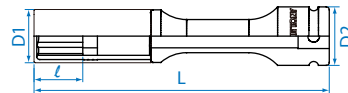
### 4945M



KT NO.	mm	D1 mm	D2 mm	ℓ mm	L mm		
494515M	15	25.0	26.0	25	85	160	5 / 60
494517M	17	27.3	30.0	26	85	213	5 / 60
494519M	19	29.3	30.0	26	85	232	5 / 60
494521M	21	30.9	30.0	26	85	243	5 / 60
494522M	22	32.0	31.5	25	85	266	5 / 60

### 4955MX

- Plastic insert to protect the surface of the wheel rim
- 17MX: Especially for wheel mounting and dismounting on AMG-rims and/or alloy rims with deeply located wheel bolts
- 19MX: Particularly suitable for wheel mounting and assembly on SUVs e.g. PORSCHE Cayenne, Macan, AUDI Q7, Q5, VW Touareg
- 21MX: Particularly for wheel mounting and installation of aluminium rims to HYUNDAI, KIA, TOYOTA, MAZDA, TESLA

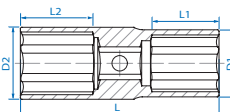


KT NO.	mm	D1 mm	D2 mm	ℓ mm	L mm		
495517MX	17	27.3	30	25	150	310	2 / 48
495519MX	19	29.3	30	25	150	339	2 / 48
495521MX	21	30.9	30	25	150	413	2 / 48

## Double - Ended Impact Socket

### 4915M

### 4915S



KT NO.	mm / inch	D1 mm	D2 mm	L mm	L1 mm	L2 mm		
49151719M	17 x 19	26	28	77	22	26	210	6 / 96
49151921M	19 x 21	26	28	77	23	26	200	6 / 96
49152122M	21 x 22	30	32	77	20	26	310	5 / 60
49152123M	21 x 23	30	32	77	22	26	310	5 / 60
49152426S	3/4" x 13/16"	26	28	77	23	26	200	6 / 96