

Deep Socket

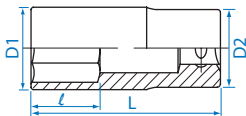
KT No. & D1



4235M

4235S \bigcirc 1/2"

- Metric-DIN 3124, ISO 2725-1
- ANSI / ASME B107.1



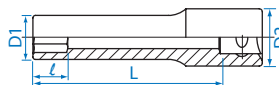
KT NO.	\bigcirc mm	D1 mm	D2 mm	l mm	L mm		
423508M	8	13.2	22.0	16	77	90	6 / 120
423509M	9	14.0	22.0	16	77	81	6 / 120
423510M	10	15.2	23.7	24	77	102	6 / 120
423511M	11	16.3	23.7	24	77	103	6 / 120
423512M	12	17.7	23.7	24	77	113	6 / 120
423513M	13	18.7	23.7	24	77	119	6 / 120
423514M	14	20.2	23.7	35	77	121	6 / 120
423515M	15	21.3	23.7	35	77	126	6 / 120
423516M	16	22.6	23.7	35	77	130	6 / 96
423517M	17	23.7	23.2	35	77	127	6 / 96
423518M	18	25.5	23.2	35	77	149	6 / 96
423519M	19	25.7	23.2	35	77	133	6 / 96
423520M	20	27.7	24.0	35	77	158	6 / 96
423521M	21	27.7	25.0	35	77	155	6 / 96
423522M	22	29.8	26.0	35	77	185	6 / 96
423523M	23	31.8	27.5	35	77	218	5 / 60
423524M	24	31.8	28.5	35	77	211	5 / 60
423525M	25	33.8	29.5	35	77	251	5 / 60
423526M	26	35.8	30.5	35	77	236	5 / 60
423527M	27	35.8	31.5	34	77	295	5 / 60
423528M	28	37.8	32.5	34	77	281	5 / 50
423529M	29	37.8	33.5	34	77	292	5 / 50
423530M	30	39.8	34.5	34	77	301	5 / 50
423532M	32	41.8	36.0	34	77	330	5 / 50
423533M	33	43.8	38.5	35	77	373	5 / 50
423534M	34	44.8	38.5	35	77	478	5 / 50
423536M	36	46.8	40.5	36	77	478	2 / 40
423538M	38	49.0	40.5	38	77	504	2 / 40
423541M	41	53.0	40.5	40	77	521	2 / 24

KT NO.	\bigcirc inch	D1 mm	D2 mm	l mm	L mm		
423510S	5/16	13.2	22.0	16	77	90	6 / 120
423512S	3/8	14.7	22.0	16	77	84	6 / 120
423514S	7/16	16.3	23.7	24	77	104	6 / 120
423516S	1/2	18.7	23.7	24	77	116	6 / 120
423518S	9/16	20.2	23.7	35	77	123	6 / 120
423520S	5/8	22.6	23.7	35	77	130	6 / 96
423522S	11/16	23.7	23.2	35	77	124	6 / 96
423524S	3/4	25.7	23.2	35	77	131	6 / 96
423526S	13/16	27.7	25.0	35	77	157	6 / 96
423528S	7/8	29.8	26.0	35	77	181	6 / 96
423530S	15/16	31.8	28.5	35	77	218	5 / 60
423532S	1	33.8	29.5	35	77	223	5 / 60
423534S	1-1/16	36.6	31.5	34	77	266	5 / 60
423536S	1-1/8	37.8	32.5	34	77	262	5 / 50
423538S	1-3/16	39.8	34.5	34	77	296	5 / 50
423540S	1-1/4	41.8	36.0	34	77	327	5 / 50
423542S	1-5/16	44.0	38.5	35	77	430	5 / 50
423544S	1-3/8	46.0	38.5	35	77	452	2 / 40
423546S	1-7/16	47.5	40.5	36	77	485	2 / 40
423548S	1-1/2	49.0	40.5	38	77	507	2 / 40

4245M

EXTENDED LENGTH \bigcirc 1/2"

- DIN 3120

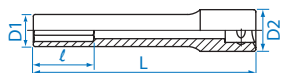


KT NO.	\bigcirc mm	D1 mm	D2 mm	l mm	L mm		
424508M	8	13.2	22.0	9.0	90	104	6 / 120
424509M	9	14.0	22.0	10.0	90	106	6 / 120
424510M	10	15.2	23.7	11.0	90	130	6 / 120
424512M	12	17.7	23.7	13.0	90	152	6 / 120
424513M	13	18.7	23.7	14.0	90	151	6 / 120
424514M	14	20.2	23.7	15.0	90	159	6 / 120

4255M

EXTENDED LENGTH \bigcirc 1/2"

- DIN 3120



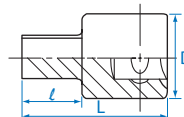
KT NO.	\bigcirc mm	D1 mm	D2 mm	l mm	L mm		
425508M	8	13.2	22.0	9	120	127	6 / 96
425509M	9	14.0	22.0	10	120	134	6 / 96
425510M	10	15.2	23.7	11	120	160	6 / 96
425512M	12	17.7	23.7	13	120	195	6 / 96
425513M	13	18.7	23.7	14	120	201	6 / 96
425514M	14	20.2	23.7	15	120	202	6 / 96

Square Socket

4014M

\blacksquare 1/2"

- DIN 3120



KT NO.	\blacksquare mm	\blacksquare inch	D mm	l mm	L mm		
401408M	RB8.0		23.5	13.5	35	54	10 / 200
401409M	RB9.5	3/8	23.5	13.5	35	58	10 / 200
401410M	RB10.0		23.5	13.5	35	57	10 / 200
401411M	RB10.5		23.5	13.5	35	58	10 / 200
401412M	RB12.0		23.5	13.5	35	62	10 / 200
401413M	RB12.7	1/2	23.5	13.5	35	64	10 / 200
401414M	RB13.5		23.5	13.5	35	67	10 / 200
401419M	RB19.0		25.0	15.5	40	108	10 / 160