

Riveter & Set

21-20-101

- Stainless steel riveter nozzles
- Drop-forged aluminum body



Ø 2.4~4.8mm

KT NO.	L		Capacity		kg	Crate
	inch	mm	inch	mm		
21-20-101	10-1/4	260	3 / 32	Ø 2.4	588	12 / 24
			1 / 8	Ø 3.2		
			5 / 32	Ø 4.0		
			3 / 16	Ø 4.8		

21-20-07MR

Blow case size (mm) :
276 x 160 x 46(0.122 cuft)



121 PC.

Contents	kg	Crate	Each Qty
4 x 8 mm	1.06	1 / 16	20
4 x 10 mm			
4 x 8 mm			
4 x 10 mm			
4.8 x 8 mm	1	1	1
4.8 x 10 mm			
21-20-101			

21-20-102

- 4 changeable sizes
- Stainless steel riveter
- The driver can be used in 90° and 180°

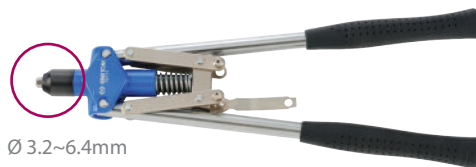


KT NO.	L		Capacity		kg	Crate
	inch	mm	inch	mm		
21-20-102	11	278	3 / 32	Ø 2.4	778	6 / 24
			1 / 8	Ø 3.2		
			5 / 32	Ø 4.0		
			3 / 16	Ø 4.8		

Riveter

79711

- Stainless steel riveter nozzles
- Drop-forged aluminum body
- Heavy duty riveter for stainless or aluminum rivets



Ø 3.2~6.4mm

KT NO.	L		Capacity		kg	Crate
	inch	mm	inch	mm		
79711	18	460	1 / 8	Ø 3.2	1480	1 / 12
			5 / 32	Ø 4.0		
			3 / 16	Ø 4.8		
			1 / 4	Ø 6.4		

Expander Riveter

79721

- Expander framework design to press riveter
- 4 PC. Interchangeable nozzles
- Heavy duty riveter for stainless or aluminum rivets



KT NO.	L		Capacity		kg	Crate
	mm(min)	mm(max)	inch	mm		
79721	315	870	1 / 8	Ø 3.2	2.00	1 / 10
			5 / 32	Ø 4.0		
			3 / 16	Ø 4.8		
			1 / 4	Ø 6.4		

Blind Nut Riveter

21-30-09MR

- Designed for fastening object to thin metal
- 4 PC. interchangeable mandrels (M4, M5, M6, M8)
- 80 PC. iron nut rivet



85 PC.

KT NO.	L		Capacity	kg	Crate
	inch	mm			
21-30-09MR	10-1/2	265	M4 x 0.7	1.32	1 / 12
			M5 x 0.8		
			M6 x 1.0		
			M8 x 1.25		

